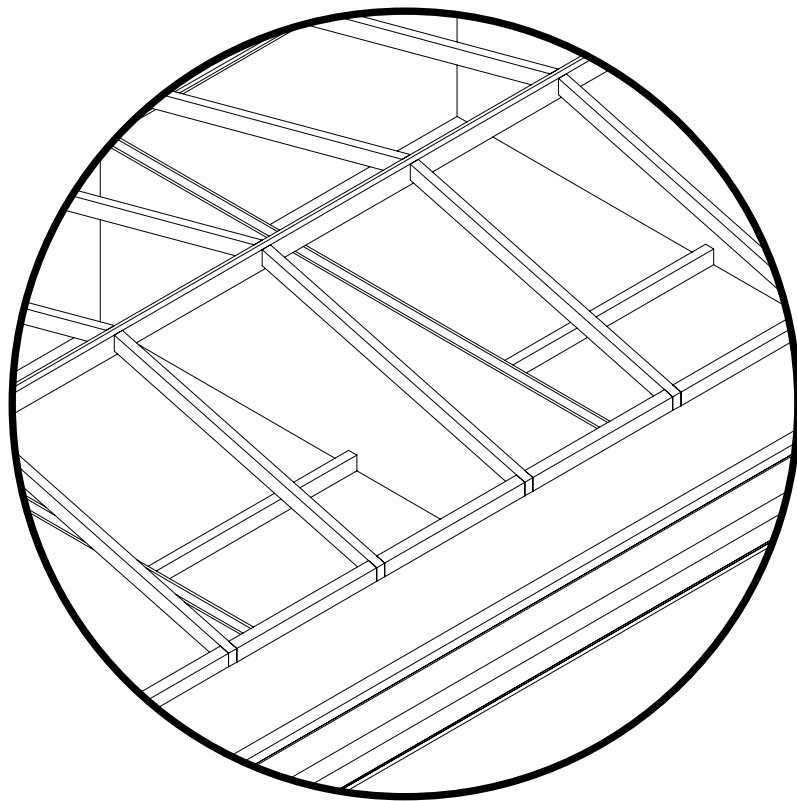
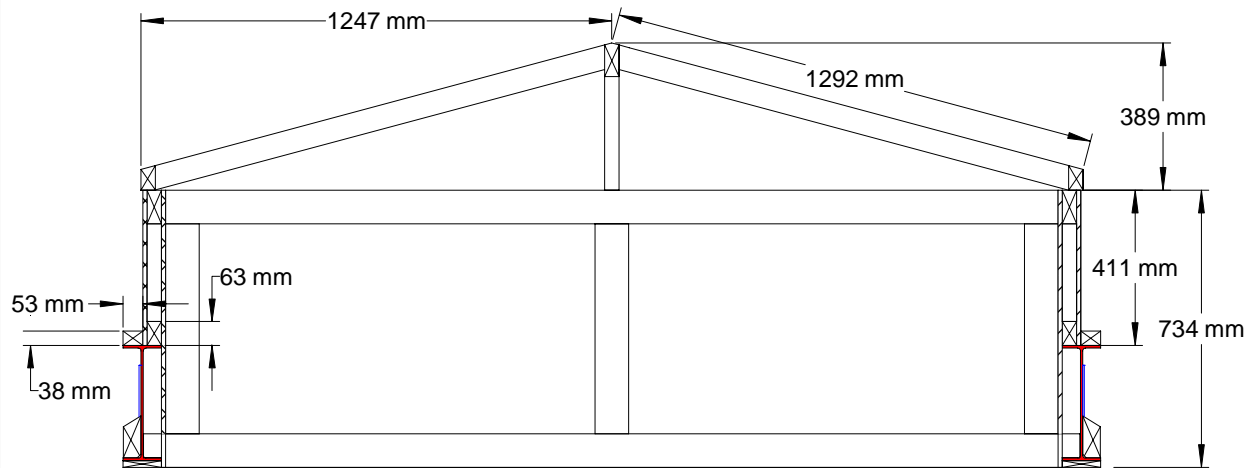
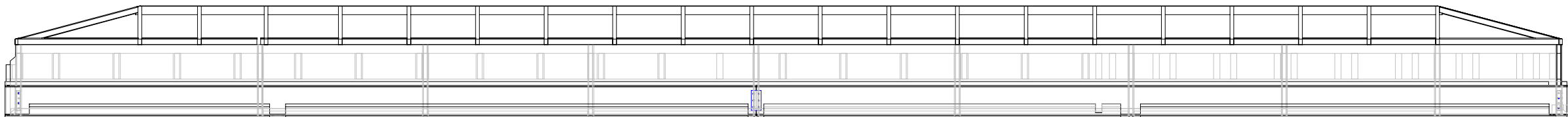
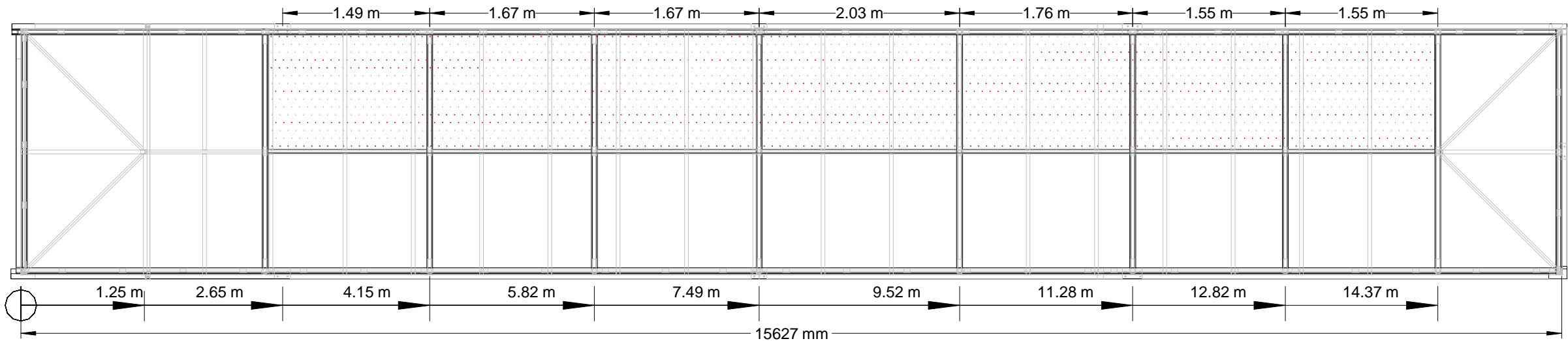




Ceiling of room. 11mm OSB + 10mm Fermacell fixed to frame - will act as racking for skylight.



'Roselea' Smiths Loke

Bradwell, Gt. Yarmouth NR31 8DG

TITLE

Skylight Design

SIZE

A3

DATE

10/04/13

DRAWN BY

Stephen McGarry

REV

1.0

SCALE

1:50

SHEET

11 of 19

Skylight is glazed with twin 24mm double glazing units on EPDM seals, supported by timber framework 63mm x 38mm C16. Dead load 0.65 kN/m<sup>2</sup>